

Catalog Number	
Project Notes	

## Attain Round TRACK HEAD

### Features & Functionality

- Purpose** Adjustable LED track head for indoor IP20 projects.
- Concept** COB LED track head featuring Cameta™ lens.
- Material** Aluminum body.
- Finish** Available in White, Silver and Black finishes.
- Mounting** Compatible with H-type, J-type, L-type and Global type track mounts
- LED** CREE COB LED
- Color Temp.** 2700°K, 3000°K, 4000°K and 5000°K available. Up to 95 CRI
- Optics** Cameta™ lens with anti-glare
- Beam Spread** 15°, 24°, 38° and 60° beam spreads available
- Output** 8.5W: up to 700 Lumens    15W: up to 1,358 Lumens  
25W: up to 2,154 Lumens    36W: up to 3,052 Lumens  
45W: up to 4,245 Lumens
- Dimming** 100% to 10%. Compatible with most dimmers
- Lifespan** 50,000 hours
- Warranty** 5-year warranty



### Lumen Information

LUMENS	WATTAGE	EFFICACY
700Lm	8.5W	82Lm/W
1,358Lm	15W	91Lm/W
2,154Lm	25W	86Lm/W
3,052Lm	36W	85Lm/W
4,245Lm	45W	94Lm/W



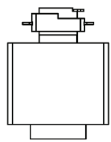
### Product Selection Guide

Example: AT-TR-RD-15-30-95-24-A-SV-G

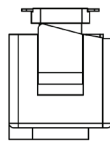
PRODUCT	SERIES	WATTAGE	COLOR TEMP	CRI	OPTICS	VOLTAGE	BODY COLOR	MOUNTING	DIMMING (OPTIONAL)
AT-TR – Attain LED Track Head	RD – Round	08 – 8.5W <sup>1</sup> 15 – 15W 25 – 25W 36 – 36W <sup>2</sup> 45 – 45W	27 – 2700°K 30 – 3000°K 40 – 4000°K 50 – 5000°K	82 – 82 CRI <sup>3</sup> 95 – 95 CRI <sup>3</sup>	15 – 15° 24 – 24° 38 – 38° 60 – 60°	A – 120VAC (Dimmable) B – 100-264VAC <sup>4</sup> (Non-dimmable)	WH – White SV – Silver BK – Black	H – H-type J – J-type L – L-type G – Global type	N – Non-dimming D – 0-10V dimming

<sup>1</sup> 24°, 38° or 60° beam spread only.    <sup>2</sup> 24° or 38° beam spread only.    <sup>3</sup> 95 CRI Available for 2700°K or 3000°K.    <sup>4</sup> 25W Model only.

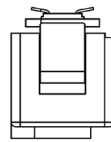
### Mounting



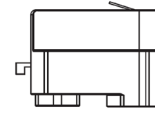
H-type



J-type



L-type



Global

### Dimensional Information

