

Catalog Number	
Project Notes	

## Track Head- Water Drop

### Features & Functionality

<b>Purpose</b>	Adjustable LED track head for indoor IP20 projects.
<b>Concept</b>	COB LED track head featuring Cameta™ lens and self-cleaning aluminum body design.
<b>Material</b>	Aluminum body with integrated self-cleaning design.
<b>Finish</b>	Available in White, Silver and Black finishes.
<b>Mounting</b>	Compatible with H-type, J-type, L-type and Global type track mounts
<b>LED</b>	CREE COB LED
<b>Color Temp.</b>	2700°K, 3000°K, 4000°K and 5000°K available. Up to 95 CRI
<b>Optics</b>	Cameta™ lens with anti-glare
<b>Beam Spread</b>	15°, 24°, 38° and 60° beam spreads available
<b>Output</b>	Up to 4100 Lumens
<b>Dimming</b>	100% to 10%. Compatible with most dimmers
<b>Voltage</b>	120V
<b>Lifespan</b>	50,000 hours
<b>Warranty</b>	5-year warranty



### Lumen Information

LUMENS	WATTAGE	EFFICACY
780Lm	10W	78Lm/W
1,200Lm	15W	80Lm/W
2,100Lm	22W	95Lm/W
3,000Lm	35W	86Lm/W
4,100Lm	45W	91Lm/W

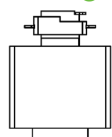
### Product Selection Guide

Example: AT-TR-WD-10-27-95-24-A-SV-G

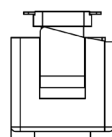
PRODUCT	SERIES	WATTAGE	COLOR TEMP	CRI	OPTICS	BODY COLOR	MOUNTING
AT-TR – Attain LED Track Head	WD – Water Drop	10 – 10W <sup>1</sup> 15 – 15W 22 – 22W 35 – 35W <sup>2</sup> 45 – 45W	27 – 2700°K 30 – 3000°K 40 – 4000°K 50 – 5000°K	82 – 82 CRI 95 – 95 CRI <sup>3</sup>	15 – 15° 24 – 24° 38 – 38° 60 – 60°	WH – White SV – Silver BK – Black	H – H-type J – J-type L – L-type G – Global type

<sup>1</sup> 24°, 38° or 60° beam spread only. <sup>2</sup> 24° or 38° beam spread only. <sup>3</sup> 95 CRI Available for 2700°, 3000° or 4000°.

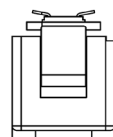
### Mounting



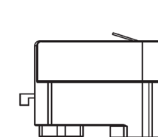
H-type



J-type



L-type



Global

### Dimensional Information

